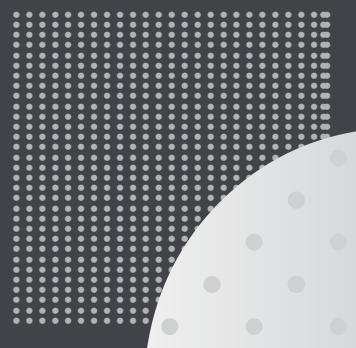


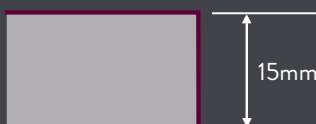
+
FORTE PERFORATED
PRODUCT DATA SHEET
WWW.SEKTORINTERIORS.COM

PARTITIONING | GLAZING | BLINDS & GRAPHICS
DOORS & IRONMONGERY | CEILINGS & LIGHTING | WALLS & FRAMES | WASHROOMS

FORTE PERFORATED



SQUARE EDGE PROFILE



PRODUCT DATA SHEET

FORTE PERFORATED

DIMENSIONS

Thickness	0.5mm galvanised steel
Size & Edge Detail	600 x 600mm E15

GENERAL DATA

Surface Pattern	Perforated 1.5mm Ø (22% open area)
Composition	Powder coated G alvanised steel with acoutical Ryalin inlay
Grid Compatibility	T-15
Colour	RAL 9010 (20% Gloss)
Light Reflection	Approx. 84%

FIRE PERFORMANCE

Reaction to Fire	A2-s1,d0
Fire Resistance Timber Floors	N/A
Fire Resistance Steel Beam Floors	N/A
Fire Resistance Mezzanine Floors	N/A

ACOUSTIC PERFORMANCE

Room to Room Airborne Sound Reduction	D n c w :34 dB
Sound Absorption	0.65 NRC 0.75
(please see the document of Peutz Report-Sound Absorption-A 2823-2E-RA-001.pdf)	
Absorption Class	C

HUMIDITY RESISTANCE	Up to 100% RH
----------------------------	---------------

HANDLING & STORAGE

Shadow angle should be used for lateral sides facing inwards of the gypsum board. The first hanger system should not exceed 450mm distance from the wall and the distance between hangers could be max 1000mm. Double spring clip, hanger wire and steel anchor will be used to suspend the runners securely. The distance between wall angle and the main runner should be a maximum 600mm. The distance between the main runners should not exceed 1200mm. The cross runners should be positioned approximately 600mm away from each other. Microlook Lay-in Panels have 8mm return from the T-15 system. Lighting, sprinkler or ventilation points should be mounted according to the project layout after the ceiling installation. Services should be independently suspended; also additional hangers for ceiling system may be required.

INSTALLATION

EUROPEAN HARMONISED STANDARD **BS EN 13964:2014**

GRID COMPATIBILITY MATRIX

Description	Pack Coverage (m ²)	Edge	15mm Grid	24mm Grid
SEK Forte Perforated 600 x 600 x 0.5	5.04	E 15	Yes	No

